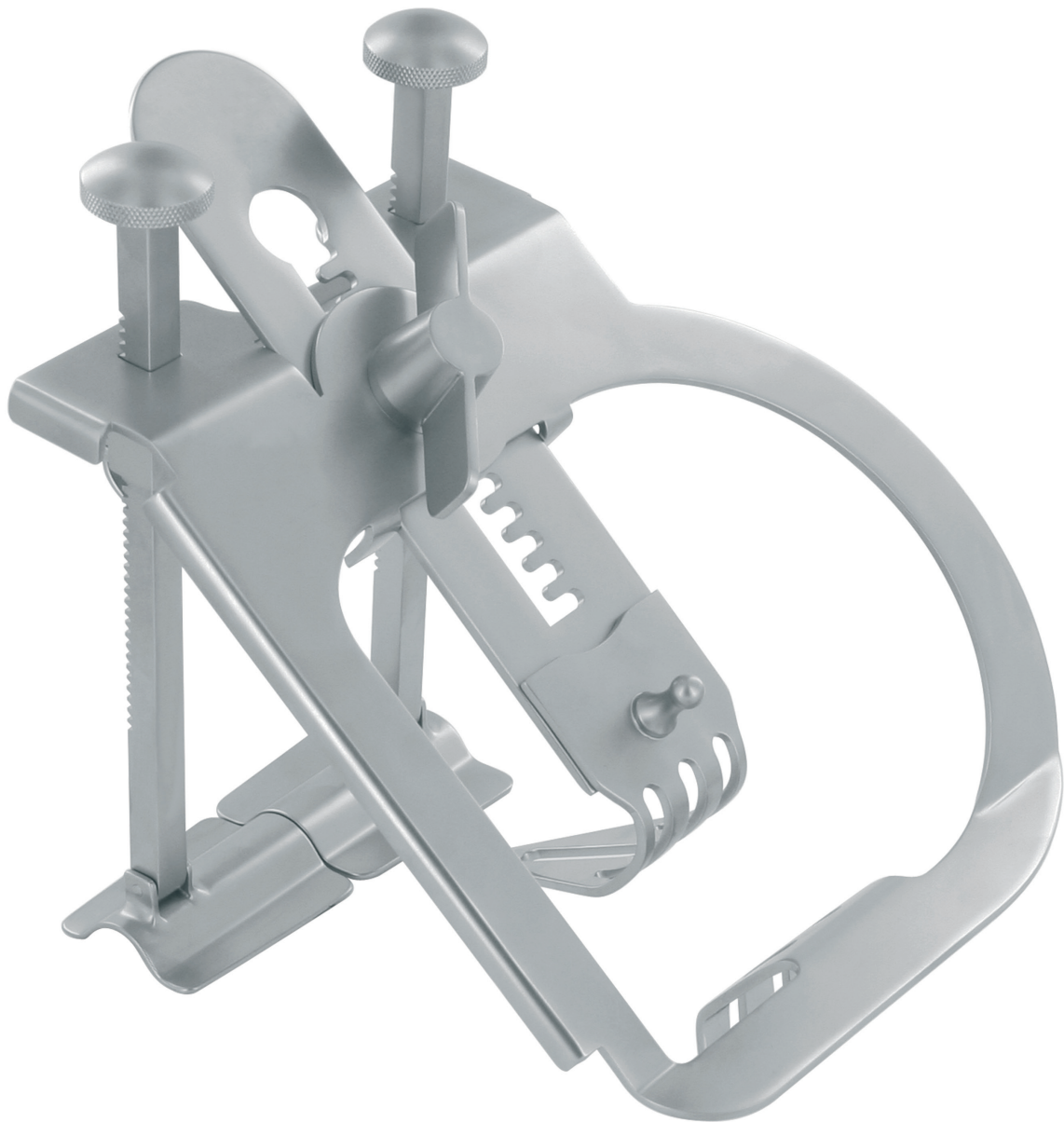


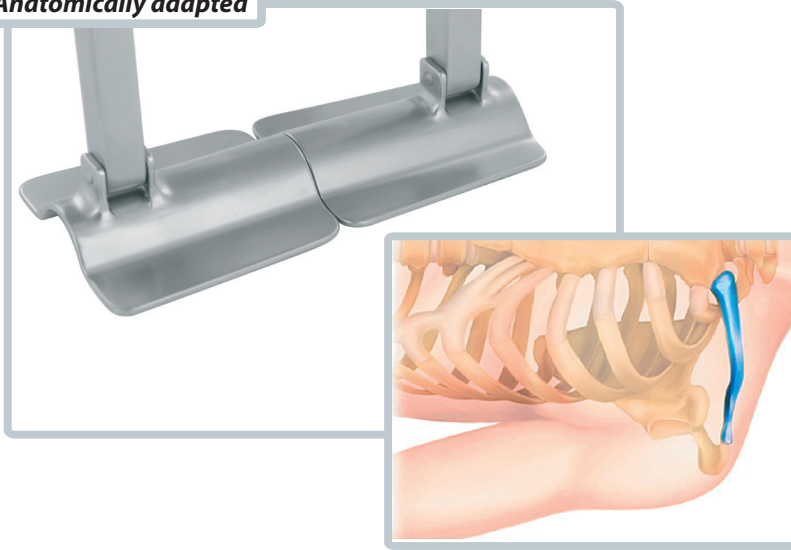

Delacroix-Chevalier
Paris



MIDAccess IMA Retractor

Specially designed for the IMA Harvesting during Minimally Invasive Direct Coronary Artery Bypass (MIDCAB).

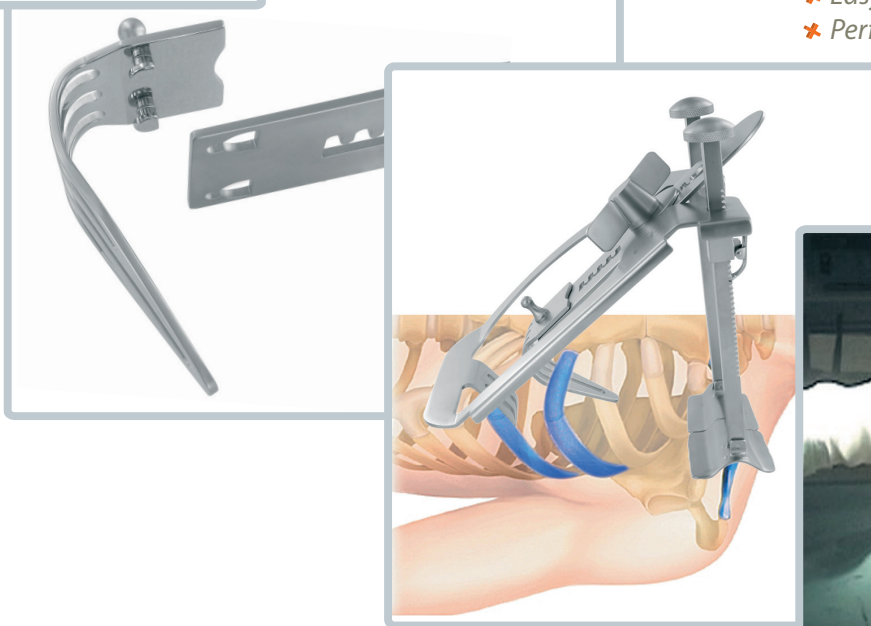
Anatomically adapted



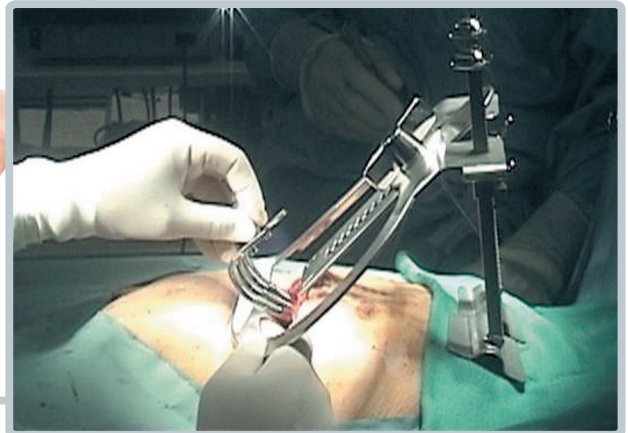
- ✦ Perfect stability thanks to collarbone-shape feet,
- ✦ Easy adjustment of the orientation thanks to the 2 independant legs,
- ✦ Perfectly adapted to the anatomy of the patients.



Easy positioning

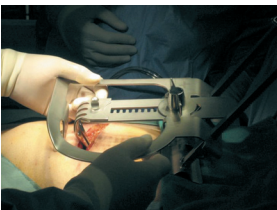


- ✦ Perfect adaptation to each step of the procedure thanks to 3 sizes of arched blades,
- ✦ Easy changing blade thanks to 2 connectivity pins,
- ✦ Perfect exposure of the Mammary Artery.



Step by Step

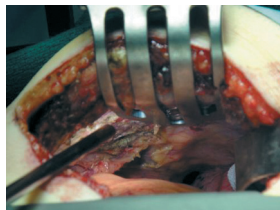
Setting up



Opening



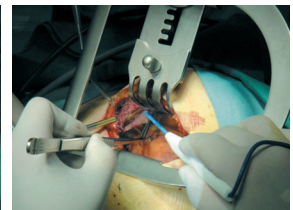
Exposure



Change of blade



IMA Harvesting

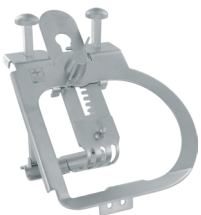


DC82200-00



MIDAccess IMA Retractor for MIDCAB procedure

- ✘ Intercostal IMA self-retracting retractor: does not need any arm to hold it,
- ✘ Easy positioning and changing blade with an upper holding pin,
- ✘ Complete dissection of mammary artery thanks to 3 sizes of blades,
- ✘ A stabilizer can be fixed on it to perform the anastomosis,
- ✘ Totally comes apart for a simple cleaning,
- ✘ Provided with three blades :
65 x 40mm, 85 x 40 mm and 110 x 40mm.





Corporate Office

13, avenue de la République - 75011 Paris - France

Customer Service and Manufacturing

Z.I. la Vendue - B.P. 2152 - 52906 Chaumont Cedex 9 - France

Phone : +33 (0) 3 25 02 10 35 - Fax : +33 (0) 3 25 02 10 20 - Email : export@delacroix-chevalier.com

www.delacroix-chevalier.com