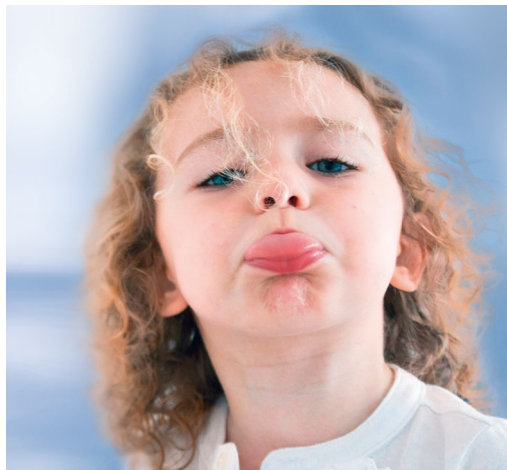




CHILDREN REMAIN CHILDREN

Even with heart disease.



The mobile driving unit for EXCOR® blood pumps

EXCOR® **ACTIVE**

THE NEW MOBILE DRIVING UNIT



Suitable for patients of all ages and sizes



Driving unit as small as a hand luggage, only 15 kg including batteries



Battery runtime of at least 5 hours even in BVAD mode



Active flow measurement with custom alarm settings



Different mobilization options for every age

Long Battery Runtime

- 2 + 2 batteries included for more mobility
- Runtime at least 5 hrs, min. 7 hrs for BVAD in children
- Additional built-in emergency battery
- Easy charging in driving unit or at external battery charging unit



Active Flow Measurement

- Ultrasound clamp-on flow sensor designed for EXCOR® cannula
- Full control of pump performance by measuring blood flow
- Alarm if measurement falls below flow alarm threshold (individually adjustable)
- Different sizes to match the cannula diameter optimally



User-friendly Panel PC

- Intuitive touch screen
- Data storage in the driving unit (enough for entire maintenance interval)
- Retrieval of data on panel PC at any time

Different Mobilization Options

- CE marked for hospital environmental use
- Baby Buggy for the smallest (≤ 15 kg)
- Two seat options for baby buggy



ADVANTAGES AT A GLANCE



45dB (A) in BVAD mode

58dB (A) in BVAD mode



33 x 40 x 22 cm

46 x 95 x 73 cm



15 kg

90 kg



≥ 5 h

≤ 30 min



Hospital environmental use
Protection class IP53

Stationary use only

Berlin Heart GmbH
Wiesenweg 10
12247 Berlin
Germany
Phone +49 30 81 87 - 26 00
Fax +49 30 81 87 - 26 01
info@berlinheart.de
www.berlinheart.de

Berlin Heart Inc.
9391 Grogan's Mill Road
Suite A-6 · The Woodlands
TX 77380 · USA
Phone +1 281 863 - 97 00
Fax +1 281 863 - 97 01
info@berlinheartinc.com
www.berlinheart.com

The EXCOR® Pediatric
Ventricular Assist Device
(EXCOR® Pediatric) is
approved for use in the US.
Federal law restricts this device
to sale by or on the order of a
physician.

Version MFP51.1
November 2019
© Berlin Heart GmbH

CE₀₁₂₃